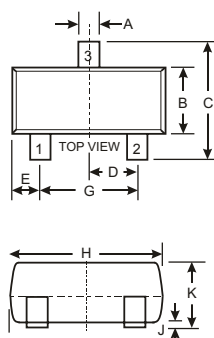


Features

- Built-in bias resistors enable the configuration of an inverter circuit without connecting external input resistors(see equivalent circuit)
- The bias resistors consist of thin-film resistors with complete isolation to allow negative biasing of the input. They also have the advantage of almost completely eliminating parasitic effects
- Only the on/off conditions need to be set for operation,making device design easy
- Marking Code:E23

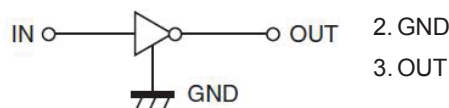
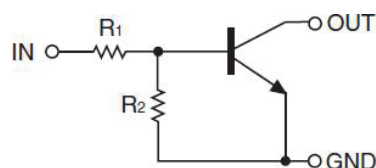


SOT-23		
Dim	Min	Max
A	0.37	0.51
B	1.20	1.40
C	2.30	2.50
D	0.89	1.03
E	0.45	0.60
G	1.78	2.05
H	2.80	3.00
J	0.013	0.10
K	0.903	1.10
L	0.45	0.61
M	0.085	0.180
α	0°	8°
All Dimensions in mm		

Maximum Ratings @ $T_A = 25^\circ\text{C}$ unless otherwise specified

Symbol	Parameter	Limits	Unit
V_{CC}	Supply Voltage	50	V
V_{IN}	Input Voltage	-5~+30	V
I_O	Output Current	100	mA
P_D	Power Dissipation	200	mW
T_j	Junction Temperature	150	$^\circ\text{C}$
T_{stg}	Storage Temperature	-55~+150	$^\circ\text{C}$

Equivalent Circuit

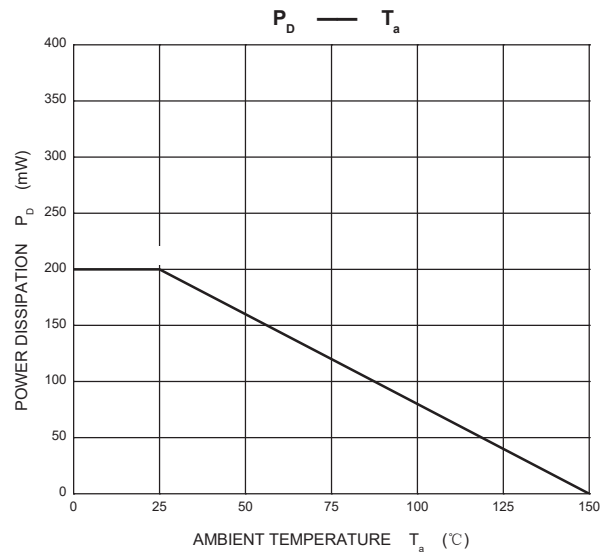
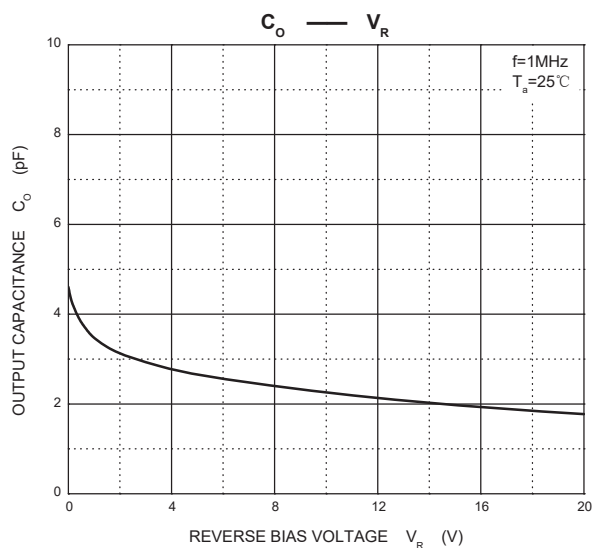
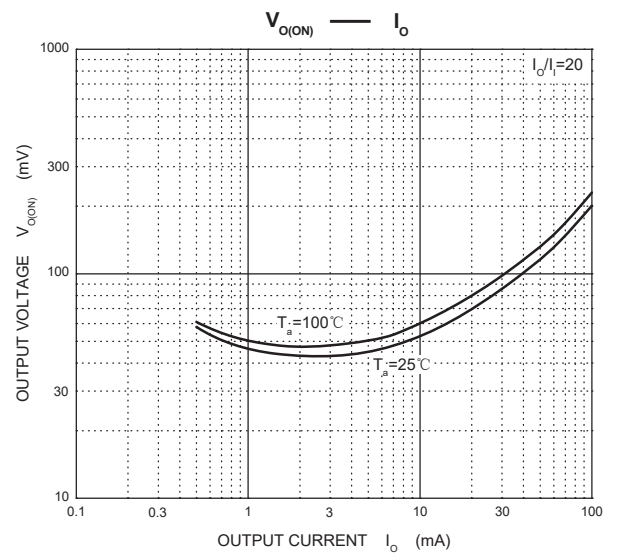
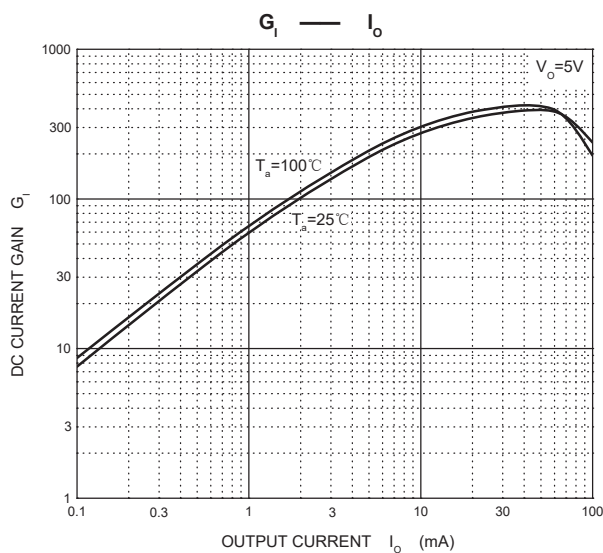
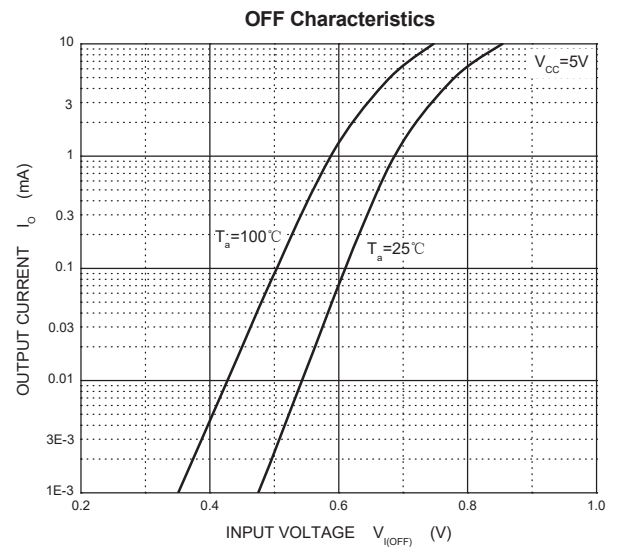
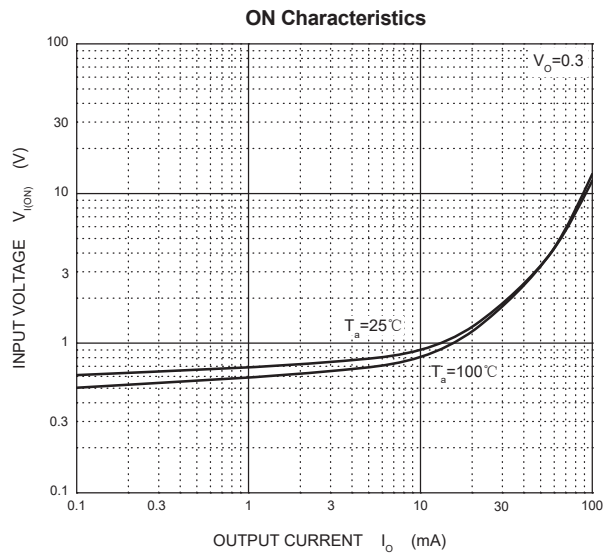


1. IN
2. GND
3. OUT

Electrical Characteristics @ $T_A = 25^\circ\text{C}$ unless otherwise specified

Parameter	Symbol	Conditions	Min	Typ	Max	Unit
Input voltage	$V_{I(off)}$	$V_{CC}=5V, I_O=100\mu A$	0.5			V
	$V_{I(on)}$	$V_O=0.3V, I_O=5mA$			1.3	V
Output voltage	$V_{O(on)}$	$I_O/I_I=5mA/0.25mA$			0.3	V
Input current	I_I	$V_I=5V$			1.8	mA
Output current	$I_{O(off)}$	$V_{CC}=50V, V_I=0$			0.5	μA
DC current gain	G_I	$V_O=5V, I_O=10mA$	80			
Input resistance	R_I		3.29	4.7	6.11	k Ω
Resistance ratio	R_2/R_1		8	10	12	
Transition frequency	f_T	$V_O=10V, I_O=5mA, f=100MHz$		250		MHz

TYPICAL TRANSIENT CHARACTERISTICS



IMPORTANT NOTICE

HC-SEMI reserves the right to make changes without further notice to any products herein.

HC-SEMI makes no warranty, representation or guarantee regarding

The suitability of its products for any particular purpose, nor does HC-SEMI assume any liability arising out of the application or use of any product or circuit, and specifically disclaims any and all liability, including without limitation consequential or incidental damages.

“Typical” parameters can and do vary in different applications. All operating parameters, including “Typicals” must be validated for each customer application by customer’s technical experts.

HC-SEMI products are not designed, intended, or authorized for use as components in systems intended for surgical implant into the body, or other applications intended to support or sustain life, or for any other application in which the failure of the HC-SEMI product could create a situation where personal injury or death may occur.

Should Buyer purchase or use HC-SEMI products for any such unintended or unauthorized application, Buyer shall indemnify and hold HC-SEMI and its officers, employees, subsidiaries, affiliates, and distributors harmless against all claims, costs, damages, and expenses, and reasonable attorney fees arising out of, directly or indirectly, any claim of personal injury or death associated with such unintended or unauthorized use, even if such claim alleges that HC-SEMI was negligent regarding the design or manufacture of the part.