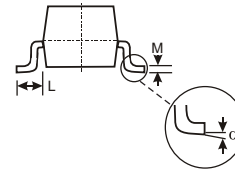
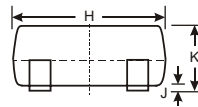
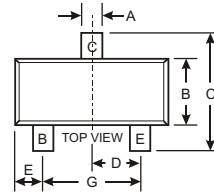


### Features

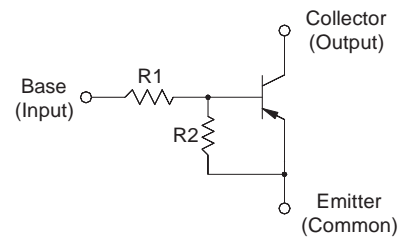
- With built-in bias resistors.
- Simplify circuit design.
- Reduce a quantity of parts and manufacturing process.
- Marking Code:54



SOT-23		
Dim	Min	Max
A	0.37	0.51
B	1.20	1.40
C	2.30	2.50
D	0.89	1.03
E	0.45	0.60
G	1.78	2.05
H	2.80	3.00
J	0.013	0.10
K	0.903	1.10
L	0.45	0.61
M	0.085	0.180
$\alpha$	0°	8°
All Dimensions in mm		

### Maximum Ratings @ $T_A = 25^\circ\text{C}$ unless otherwise specified

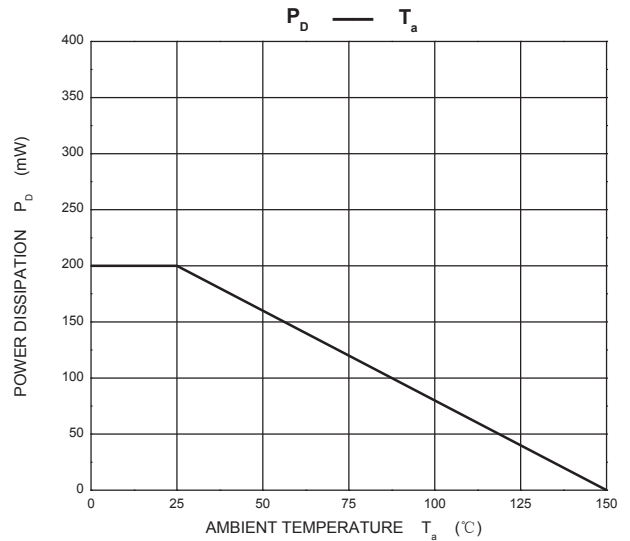
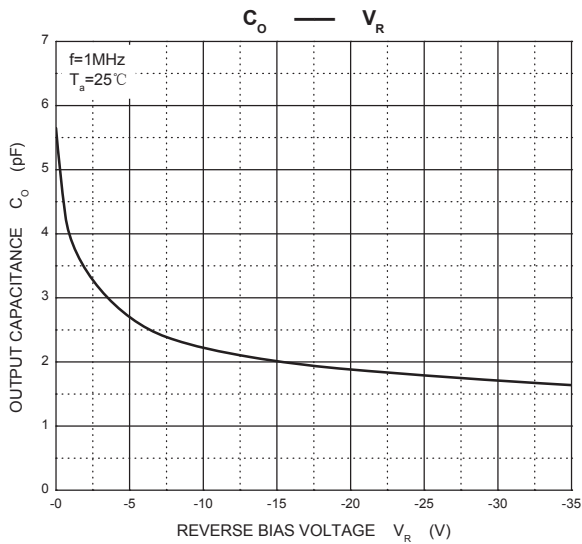
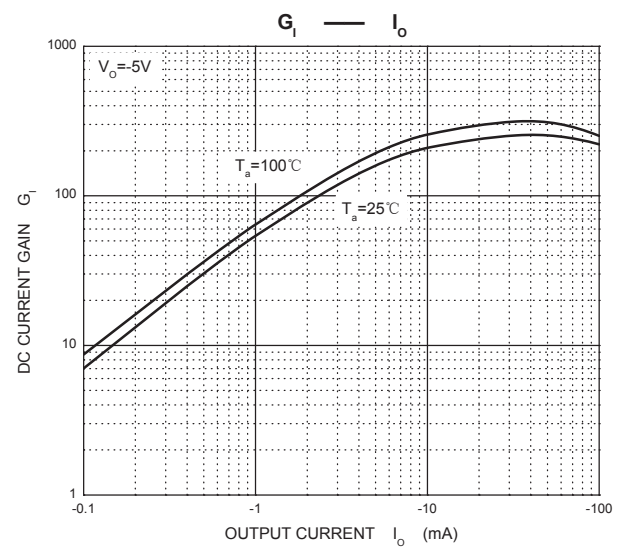
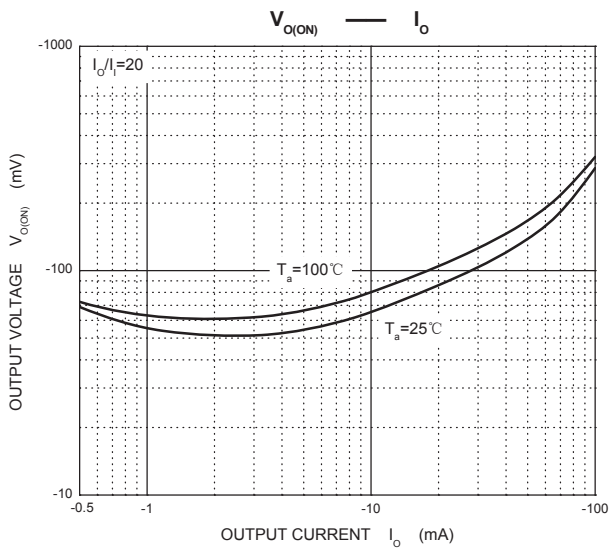
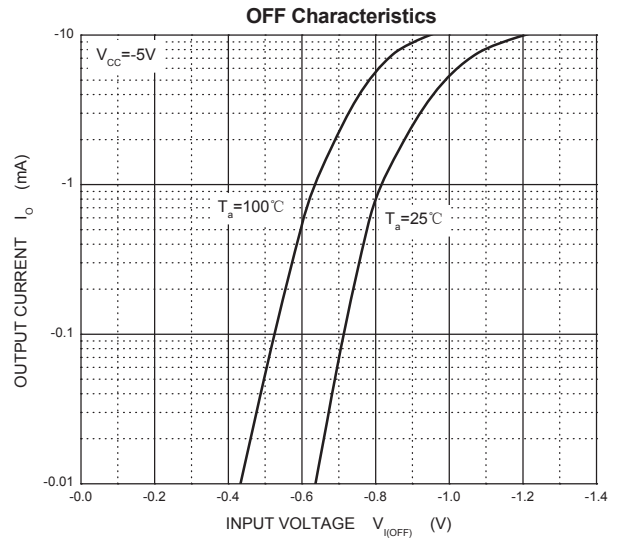
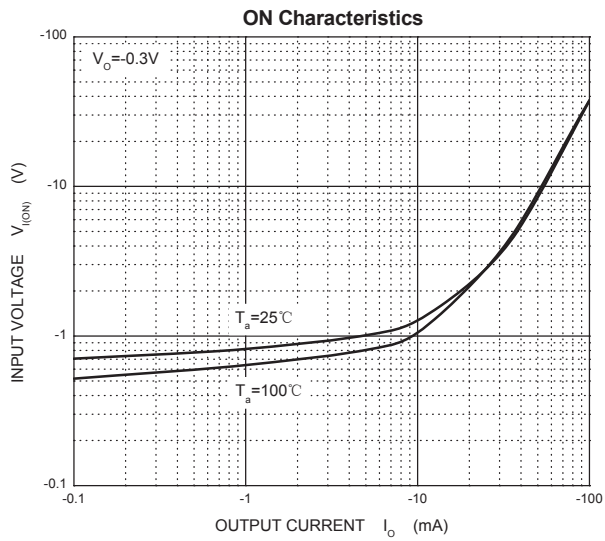
Parameter	Symbol	Value	Unit
Supply Voltage	$V_{CC}$	-50	V
Input Voltage	$V_{IN}$	-40~+6	V
Output Current	$I_O$	-70	V
Peak Collector Current	$I_{CM}$	-100	mA
Power Dissipation	$P_D$	200	mW
Junction Temperature	$T_j$	150	$^\circ\text{C}$
Storage Temperature	$T_{stg}$	- 55 to + 150	$^\circ\text{C}$



### Electrical Characteristics @ $T_A = 25^\circ\text{C}$ unless otherwise specified

Parameter	Symbol	Conditions	Min	Typ	Max	Unit
Input voltage	$V_{I(off)}$	$V_{CC} = -5V, I_O = -100\mu\text{A}$	-0.3			V
	$V_{I(on)}$	$V_O = -0.3V, I_O = -1\text{mA}$			-1.4	V
Output voltage	$V_{O(on)}$	$I_O/I_I = -5\text{mA}/-0.25\text{mA}$			-0.3	V
Input current	$I_I$	$V_I = -5V$			-0.88	mA
Output current	$I_{O(off)}$	$V_{CC} = -50V, V_I = 0$			-0.5	$\mu\text{A}$
DC current gain	$G_I$	$V_O = -5V, I_O = -5\text{mA}$	68			
Input resistance	$R_I$		7	10	13	$\text{k}\Omega$
Resistance ratio	$R_2/R_1$		3.7	4.7	5.7	
Transition frequency	$f_T$	$V_O = -10V, I_O = -5\text{mA}, f = 100\text{MHz}$		250		MHz

### TYPICAL TRANSIENT CHARACTERISTICS



---

## IMPORTANT NOTICE

---

HC-SEMI reserves the right to make changes without further notice to any products herein.

HC-SEMI makes no warranty, representation or guarantee regarding

The suitability of its products for any particular purpose, nor does HC-SEMI assume any liability arising out of the application or use of any product or circuit, and specifically disclaims any and all liability, including without limitation consequential or incidental damages.

“Typical” parameters can and do vary in different applications. All operating parameters, including “Typicals” must be validated for each customer application by customer’s technical experts.

HC-SEMI products are not designed, intended, or authorized for use as components in systems intended for surgical implant into the body, or other applications intended to support or sustain life, or for any other application in which the failure of the HC-SEMI product could create a situation where personal injury or death may occur.

Should Buyer purchase or use HC-SEMI products for any such unintended or unauthorized application, Buyer shall indemnify and hold HC-SEMI and its officers, employees, subsidiaries, affiliates, and distributors harmless against all claims, costs, damages, and expenses, and reasonable attorney fees arising out of, directly or indirectly, any claim of personal injury or death associated with such unintended or unauthorized use, even if such claim alleges that HC-SEMI was negligent regarding the design or manufacture of the part.